

RAINI INDUSTRIES

Precision. Quality, on time. Every time.





We are a manufacturing company producing state-of-the-art, sophisticated products in the field of plastic moulding, sheet metal fabrication and elastomer (synthetic rubber) processing. Our extensive range of products includes items like elevator parts, parts for electrical substations, car assembly parts, thin-walled containers, consumer products and more. Our ISO 9001:2008 certified manufacturing facility

caters to industries in India and abroad such as:

- Transportation
- Automotive
- Renewable energy
- Medical
- Home appliance sectors
- Electrical assembly
- Food packaging

Raini Industries India Pvt. Ltd. operates from two locations in Chennai, the Guindy

industrial belt and the SIDCO Industrial Estate, Thirumudivakkam and both spaces are spread over a sizable area of 30,000 sq ft. The Guindy unit houses the corporate office, design room and tool room. Machinery like the horizontal and vertical automatic injection moulding machines, blow moulding machines, power presses of different tonnages, press brake and shearing machines are all located in the Thirumudivakkam factory. These machines are the heart of the company, as they are crucial for the manufacture of our signature complex shaped components, which are fashioned according to the specifications of our customers. (For eg: 2.5 kg shot weight)

Raini Industries' name grows from strength to strength, as it happens to be the proud recipient of the "Prompt and Top Tax Payer" award from The Central Excise Department.





A self-made entrepreneur, Mr. L Rathnaraj has to be credited for setting up a successful manufacturing company in such a short span of time, from scratch. This kind of success requires vision, a rare character trait, determination and lot of hard-work. This approach of long-term vision and hard work has led Mr. L Rathnaraj on the path to success.

He started the company with a modest beginning about two decades ago with a single-minded goal – to be the best. To achieve this goal, he undertook various measures, always focused on maintaining

high quality design and in manufacturing superior polymer products. From setting up the framework of the company by carefully laying out the infrastructural facilities for mould-making to installing sophisticated machinery, he always seeks the best.

The collective effort of highly skilled and self-motivated personnel, who work together as a team for the progress of the organization, combined with the dynamic leadership of Mr. L Rathnaraj, has been instrumental in the rapid growth of the company in a short period.

Endowed with intrinsic engineering skills, Mr. L Rathnaraj has set a classic example to other entrepreneurs by bridging vision and action, with the sole objective of achieving perfection. Moreover, his business ventures have been instrumental in creating employment for a sizable number of people. Also, due to astute and clever hiring, his work-force is self-motivated, loyal and totally committed.

Periodically, Mr. L Rathnaraj conducts brainstorming sessions seeking creative ideas and suggestions from the shop floor and management staff. Reposing confidence in his employees, and recognizing their worth has created a vibrant work atmosphere and also helped the business to thrive and reach the heights it has today.



The Raini Design house is a leader in the field of tooling. The company is undoubtedly one of the best in South India, for fabricating a wide variety of vital tools, which are utilized to manufacture plastics and sheet metal parts.

We provide a comprehensive package from the stage of design conception to the final product and delivery. This service is also backed up by providing trial samples to customers to test. We give the

customer the opportunity to validate the tool performance before placing an order for the product, always focussed on customer satisfaction above all else. Our tools, which are highly rated, are offered at very competitive prices.

Raini Industries is rated as one of the top tool makers in South India. It is because we use the latest VMC and CNC machines, which deploy new software with facilities like 3D surfacing etc. These machines are also neatly integrated with our mould designs and analysis. This innovation and enterprise shown by our company have made our tools an exportable commodity, which are sold to countries like Sri Lanka, Malaysia and Europe.

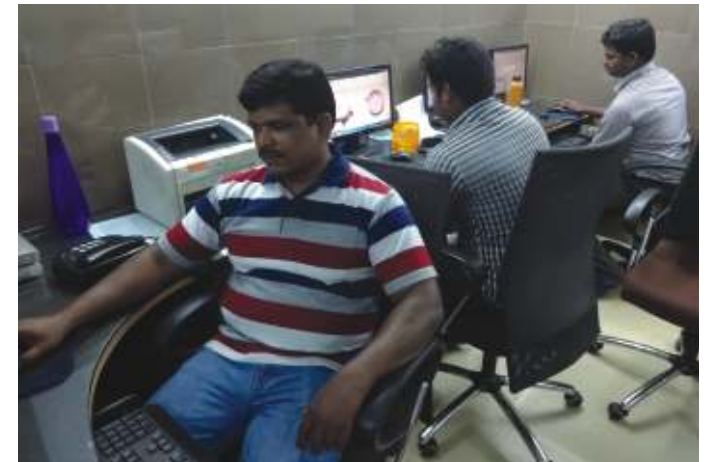


Vertical Machining



We have state-of-the-art design infrastructure with high configuration systems and software facilities for product design, core and cavity split up and NC solutions.

We use latest contemporary CIMATRON E10.0, SIEMENS NX 10.0 computer software for tool and product design solutions.



Mr Ganesh - He is an NTTF trained and qualified tool designer with 15 years experience as a top-grade tool designer and fabricator to design, prototype and fabricate the tools to exactly match the specification of the customer.



Tool Room



Lathe in operation



MAKE: MAKINO S56 (JAPAN)

Longitudinal Travel (X) :1000 mm
Cross Travel (Y) : 500 mm
Head stock travel (Z) : 500 mm
ATC Tools : 20 tool
Control systems : FANUC 31i mb control
Maximum Table Load : 800 kgs
Spindle BT40 - 12000 rpm with oil cooler
Tool length measuring device.



MAKE: DAHLIH 1020BA (TAIWAN)

Longitudinal Travel (X) :1020 mm
Cross Travel (Y) : 560 mm
Headstock Travel (Z) : 560 mm
ATC : 16 Tools
Control System : FANUC 21i mb Control.

Features:

- 80 blocks look ahead function
- Maximum table load – 1000 kg
- Spindle – BT 40 - 8000 rpm with oil cooler
- 4th axis interface ready
- Tool length measuring device



VERTICAL MILLING MACHINE WITH DRO

Make: FIRST (Taiwan) – MODEL NO: LC – 185VN – B

Table size : 1270 x 254
Spindle : ISO 40
Longitudinal Travel : 790 mm
Cross Travel : 415 mm
Vertical Travel : 390 mm

CNC ROTATORY TABLE

Make : EXACT (Taiwan) NCT – 25 OR

Features:

- Fanuc servo motor alpha series a 8/3000i
- PHC unit (Pneumatic Hydraulic Converter)
- 4th Axis function incorporated with our machine

SURFACE GRINDING MACHINE

Make: PERFECT (TAIWAN) with electromagnetic chuck

Working surface of the table: X – 600 mm; Y – 300 mm

Maximum height from table

to grinding wheel : 300 mm

Vertical feed graduation : 0.001 mm

Cross feed graduation : 0.01 mm

Bed size : X – 650 mm; Y – 350 mm

LATHE

Make: ANIL – MODEL NO: 2G SUPER

Length of Bed : 1370 mm

Centre height : 155 mm

HEAVY DUTY LATHE MACHINE

Make: SHETAL

Length of Bed : 2135 mm

Centre Height : 300 mm

DRILLING MACHINE

Make: EIFCO – MODEL NO: P2/25/GT/10

Pillar type drilling machine up to 25 mm capacities, fitted with 1 HP 1440 rpm motor gear type.

SURFACE GRINDING MACHINE (GAMT)

Working surface of the table: X - 450 mm; Y - 225 mm

Maximum height from
table to grinding wheel : 275 mm

Vertical feed graduation : 0.01 mm

Cross feed graduation : 0.05 mm

Bed size : X - 300 mm; Y - 600 mm

HYDRAULIC HAND PALLET STACKER

Make: PUMA – MODEL No. PHS 15 – 1600

Lifting height : 1.5 meters.

Lifting capacity: 1.5 tonnes with adjustable fork

AIR COMPRESSOR

Make: CHICAGO PNEUMATIC – MODEL:
CPM – 5 D – 10 BAR

Screw type air cooled air compressor with inbuilt dryer having a rated capacity of 16.5 cfm at a dryer working pressure of 10 bars

DRILLING MACHINE

Make: EIFCO (4 Nos.)

Pillar type drilling machine fitted with 1 HP motor

- Fly press : 7 Nos.
- Tapping machine : 1 No.

SURFACE TABLE

Make: GMT

Size of plate : 1000 X 630 X 150 mm

Grade : '0'

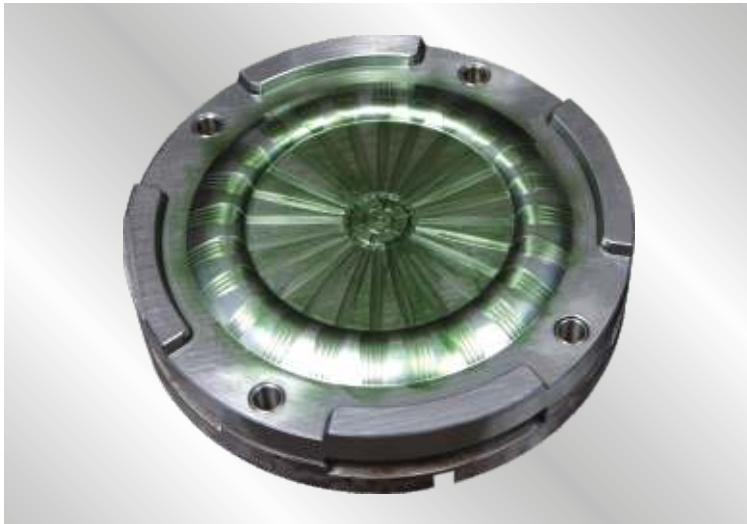
As per : IS: 876: 84: 8 of laboratory grade

TOOLS AND ACCESSORIES

- | | |
|------------------------------|-----------------------|
| VA6 milling vice | 2 Nos. |
| Hydraulic vice
(Taiwan) | Maximum day light 250 |
| Precision drill vice | |
| HV 10 rotary table | |
| Precision boring head | |
| 10" Angle plates | |
| Magnetic 'V' blocks | |
| Keyless drilling chuck | |
| VP parallel blocks | |
| VW3 – 3 way angle vice | |
| Precision tooling 'V' blocks | |

We also have end mills and cutting tools from WALLTER – GERMANY, and holding devices from SHOW – JAPAN.





Raini Industries also specialises in manufacturing high precision injection moulding dies for engineering components, pharmaceutical and household use.

MOULDING COMPONENTS

Raini Industries specialises in moulding components according to the requirements of customers using the following material:

- Polyacetol (POM)
- Polyurethane (PU)
- Thermoplastic Elastomer (TPE)
- Polyamide (PA)
- Polyetherimide (PEI)
- Polyether ether Ketone (PEEK)
- Polyphenylene sulphide (PPS)
- Polycarbonate (PC)
- Polybutylene Terephthalate (PBT)
- Polycarbonate + Polybutylene Terephthalate (PC + PBT)
- Acrylic (PMMA)

OUR FUTURE OBJECTIVE

After carving a niche and a name for itself in “manufacturing moulds” for both rubber and plastic products, Raini is forging ahead towards the next challenge. We plan to design and manufacture high-end, multi-cavity moulds with a moving core and an auto unscrewing system. This product can be offered at a very competitive price and on time.



Hydraulic press for rubber processing



Vertical automatic injection moulding



Injection moulding machines

The factory's plastic processing section with its 19 injection moulding machines with ratings from 80 to 450 tonnes, provides a one-stop solution for our customers. Besides we also have 14 injection moulding machines of various tonnages in a dedicated satellite unit located at Thiruchirapalli. The section does not just offer a range of technology but also boasts of unique facilities. Firstly, the customer can inspect the tools and witness sample trials for giving on-the-spot approvals after corrections are carried out in situ to meet their

requirements. Driven by a customer-centric approach, a third party inspection is also permitted on the factory floor. Some of the moulding technologies and the post-moulding operations offered at the factory / approved outsourced locations are given below:

Vertical plastic injection moulding, Horizontal plastic injection moulding, Insert moulding, In mould lamination, Hot runner moulding, Blow moulding and Prototyping.

Mould flow studies

- Spraying
- Screen-printing sub-assemblies
- Electro plating
- Ultra sonic welding
- Machining for dimensional match

The factory also provides a complete integrated solution to plastic processing, which includes tool development. This makes Raini Industries a "complete design solution provider" under one roof.

It is pertinent to note that Raini Industries' extensive post-moulding processes provide exhaustive solutions for the replacement of metal parts with lighter, economical plastic ones, to meet the highest standards in the industry. Our infrastructure also provides for the manufacture of NR, SBR, NBR, Silicon and EPDM and synthetic rubber based parts with 12x24 mixing mill, 12x12 and 24x24 hydraulic presses.



Injection moulding shop



Injection moulding plant office



Blow moulding machine



Process setting of moulding parameters

Raini Industries' stringent quality norms ensure that each of its products meet the exacting standards laid down by the Founder. The systems and processes have been established to ensure that not only deadlines and supply chain needs are met, but also we satisfy the high expectations of all our customers. It is no small wonder then that Raini Industries has a growing list of delighted customers.

Another fundamental manufacturing strength is that we can go beyond handling normal engineering polymers and specialise in moulding high performance polymers.

Quality is the hallmark of Raini's products, as is evident from the range of their plastic components, blow moulding components, pressure die-casting components, rubber components and press components.



Engineering plastic components produced by SM 210v moulding machine



View of power press - press shop

The fabrication workshop has seven power presses from 20 to 150 tonnage capacity, drilling machine, tapping machine, pipe cutting bandsaw machine, milling machine etc., capable of undertaking fabrication work of any complex shape using HR, CR, HRPO, GI, SS304/316, raw material. We design and use our own tools required for fabrication and jobs upto 2.5 metres X 8 mm thickness can be handled in-house on a fast track basis.



Sheet metal shearing machine

SHEET METAL WORKSHOP

The metal fabrication shop at Raini Industries has the expertise and know-how to produce parts measuring anywhere from 25 mm sq to 2,500 mm sq. We can also make complex welded parts with MIG/TIG techniques to meet the different specifications of customers. Our installed machinery has a capacity upto 150 tonnage and 2,500 mm bending capacity.



Press brake machine for sheet metal bending



MIG welding shop

WELDING

Our welding section is equipped with electric arc, TIG welding machines and with suitable in-house design fixtures, which can undertake any type of part welding. Our welders are all well-qualified as per ISO:9606 standards and have routinely cleared the standards specified for third party inspection.



Spray painting booth for surface finish



Paint baking oven

We have a fully-integrated paint finish facility. To begin with, we host a five tank pre-treatment process coupled with spray booths. Curing is implemented in twin large capacity ovens, which can handle all the individualized surface finish requirements of our customers. The in-house testing of the finished products include the scratch test, bend test, impact test etc, which ensures the best quality surface finish. And, here is a valuable nugget of information: the surface finish is capable of withstanding the 500 hours salt spray test—which is the ultimate test of good quality.



Paint plant quality control lab



Electrical control box assembly



Fasteners packing area



General view of assembly I section



Assembly I work station



Assembly II work station

A sprawling 3,000sq ft workflow space has been set up to meet the increasing customer demand for customized parts and for component assembly packages. This area is equipped with semi-automatic assembly stations, check weighing stations, packaging stations with bar code facility, labelling stations etc. This bustling section is manned by a trained workforce to handle any type of modular requirement with the component variants up to even 25 plus in number.



Assembly I work station



Plastic raw material storage



Component store



Packing box storage area



Finished goods storage



Injection moulding tool storage area

We have a separate store each for the plastic, the sheet metal, the moulds, the ESD sensitive devices and an individual store for the packaging material. The stores are supported by an effective inventory management and purchase management systems, which enable control over the material stocked. This kind of effective storage facility helps Raini Industries to follow TQM standards of excellence, such as Just-In-Time (JIT).



Component storage for elevators



ESD PROTECTED AREA

This unit contains separate electrostatic sensitive device storage and assembly, which meets the specifications of ISO 61340 standards. This enables the company to manufacture and supply electrical control panels, both with sheet metal and plastic enclosures and wiring, according to the specified drawings of OEMs.



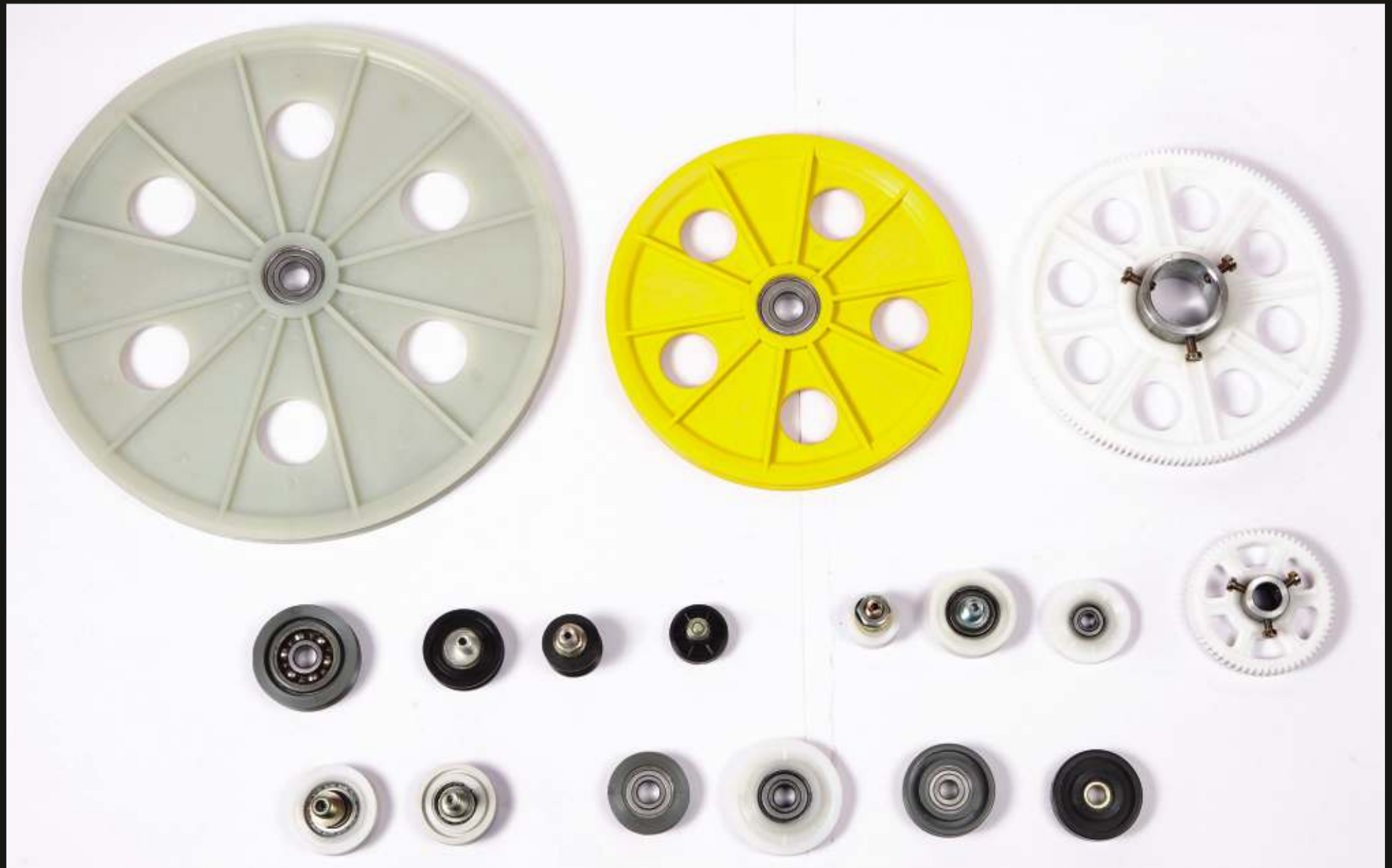
Packing and despatch station

In the packing section, we use a single line conveyor packing system with barcode and BOM scanning. Each part's pre-recorded weight is cross-verified during the scanning to ensure no parts are missed out in the package.



Our consumer line boasts of a wide range of products such as bathroom fittings, cisterns and containers for the paint industry. True to our high standards of manufacturing, our edible item containers are created from industry-worthy, food grade engineering plastic material.





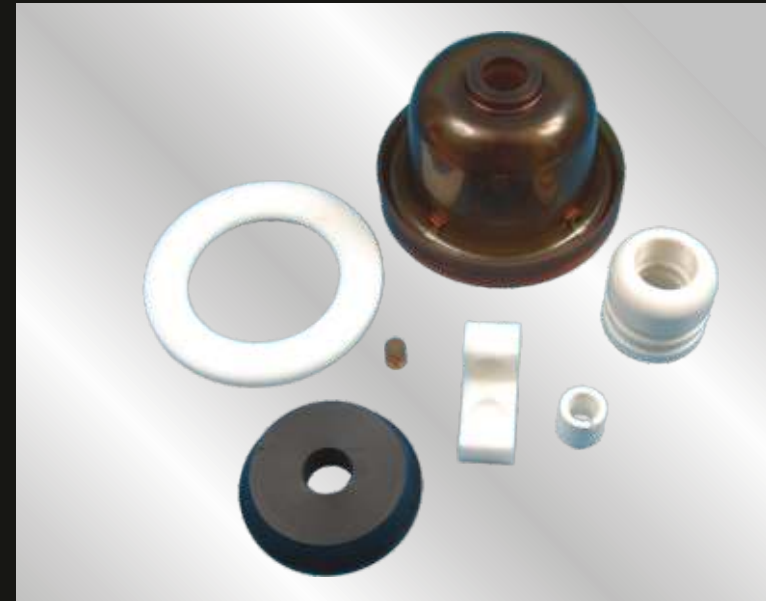


We are a direct Tier 1 supplier of an array of plastic, sheet metal parts, modular assemblies of mechanical and electrical parts, catering to the distinctive needs of the vertical transportation industry.





We manufacture a diverse range of engineering parts utilized in different industries. They are created based entirely on customer samples and drawings and with close tolerances upto 0.01 mm plus or minus.





2B. ANCHOR SYSTEM

Sleeve: Material: Virgin Polyamide (PA6)

Size: OD 8 x 60 mm length

Screw: Material: M.S – 6.8 grade Finish: galvanized

Length: 6 x 60 mm

3. METRIC THREAD CABLE GLANDS

Material: Polyamide 6

Seal: Neoprene rubber

- Metric Thread Cable Glands are used to hold cable to water-tight conditions as per IP 68 standard.
- They are easy to assemble, offer good strain relief and a wide clamping range
- They can be used in multi-purpose application and easy handling
- A unique feature of Metric Thread Cable Glands is that they can be used in temperatures of up to 1500 C

Metric Thread Cable Glands are available in the following sizes:

M20 x 1.5

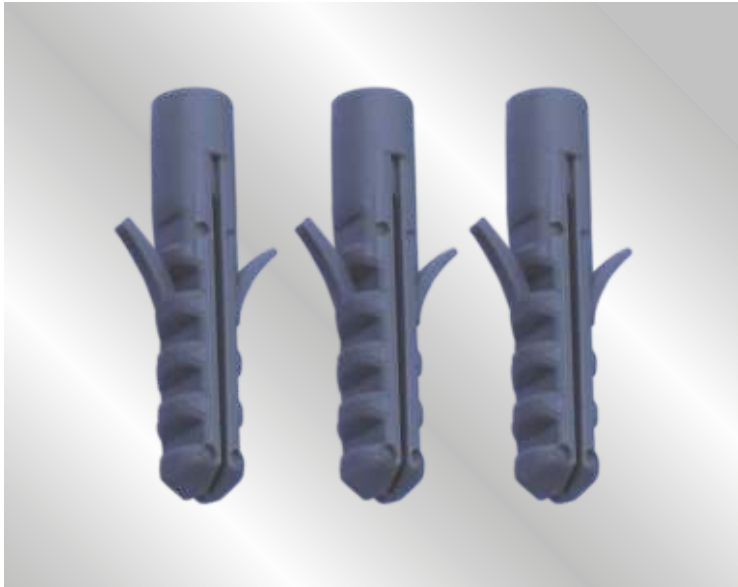
M25 x 1.5

M32 x 1.5

4. PLUG ANCHORS (SPECIAL PURPOSE)

- Plug Anchors are made of Virgin Polyamide (PA6) and are used to tie cables that are hanging on the walls.
- Plug Anchors can be fixed in the wall and the cable can be tied to it using cable ties.

Size: Length 80mm, Cable Tie Slot – 10mm



1. POLY-SET ANCHOR / SCREW PLUGS

Material: Virgin Polyamide (PA6)

- The anchors are designed for fastening into dry wall, hollow block, brick or concrete.
- These versatile plastic anchors are ideal for attaching bathroom accessories, curtain rods, shelving, electrical fittings and other such fittings and accessories.
- Their unique twisting action provides superior holding over standard poly-set anchors.

Dimensions

Poly-set anchors are available in the following sizes:

OD 6mm x 30mm Length

OD 8mm x 40mm Length

OD 10mm x 50mm Length

Standard Packing: 500 nos. in one packet



2A. POLY-SET FRAME ANCHOR WITH SCREW

Sleeve: Material: Virgin Polyamide (PA6)

Size: OD 10 x 80 mm length

Screw: Material: M.S – 6.8 grade Finish: galvanized

Length: 85 mm

- Poly-set Frame Anchor is used in hollow and solid base material such as reinforced concrete, hard natural stone, solid bricks, hollow bricks, fastening of doors, window frames and interior furnishing.
- These anchors ensure high holding power with less installation work with lower costs.
- Other key features of these anchors are long life and high load-bearing capacity due to their polyamide sleeve.

Standard Packing: 50 nos. in one carton box



In order to ensure timely procurement of raw materials and to reach finished goods to our customers on time, Raini Industries maintains its own dedicated fleet of transport vehicles.



Administration office

We have over 50 computer terminals connected by a LAN system at Raini Industries, making it easy for all the engineers and the supervisory staff to communicate with each other. There is also a dedicated leased line to access data through a cloud based server, providing instant communication support for taking on-the-spot strategic decisions. Our computers deploy the latest software, which ensures integrity and protection of data activity within the organization.

Our IT software is capable of capturing data from customer plans and translating them into actual component requirements. We use the apt software to verify stock availability, to assess shortfall if any and automatic generation of orders.



Moulding parameter quality check station



Quality assurance section office

The company deals with a wide portfolio of customers, who demand stringent quality requirements for the products delivered to them. To support this activity, a dedicated quality assurance department is set up to ensure a 24/7 production of parts exactly as per the customer's needs.

To cover every aspect of the supply chain cycle, from the raw material to the finished product, the department comprises of the latest measuring equipments such as:

- Test instruments
- Jigs / fixtures
- Go – no go gauges etc.

Coupled with the constant training provided by the peer level group, and a constant interaction with customers and the regulatory agencies, our technical team ensures zero defect products leave the factory.

OUR CERTIFICATION

- 1 ISO 9001 - 2008
- 2 ISO 14001 – 2004
- 3 OHSAS – 18001
- 4 Factory Licence
- 5 Fire Licence
- 6 Pollution Control Licence
- 7 Lift Licence
- 8 Vehicle Licence (For Dispatch)



Raini Industries provides a comprehensive factory display area to showcase master samples of the multiple products we produce. The display also details the factory procedures, which helps the factory personnel to be on their toes.





In line with the global thrust towards a greener planet and a cleaner environment, Raini Industries has allocated a large area of land for this purpose. We are committed to the environment, and follow green and sustainable practices in our factory and work. Since we strictly adhere to all regulatory pollution control norms, we minimise the consumption of natural resources and reduce waste inside the factory. We follow the practices of the European Union's Restriction of Hazardous Substances (RoHS) to ensure the absence of hazardous substances. Within our 4.5 acre facility, 80 per cent of the land is earmarked for greening the environment through tree plantations, flowerbeds, etc.





Training workshops

A company thrives on the good-will and hard work of its employees. At Raini Industries, employee care and safety, and their well-being are paramount. Committed to the safety of our employees, they are provided with proper, necessary safety gear. We also have a hygienic canteen to provide wholesome meals around the clock. The company also holds organized team building exercises, team bonding efforts through get-togethers, outstation trips etc. Employee recognition systems are in place to motivate the employee with awards like the 'Best Employee Award', 'Long Service Award', 'Incentive Award' and more.

A few of the HR initiatives, we have undertaken are listed below:

- Continuous training programmes to upgrade skill set of our employees to improve productivity.
- Encouragement to employees to shoulder greater responsibility.
- Offer a remuneration package that is designed to retain talent.
- The Company ensures equal opportunity to all employees.





Mr. R. Panchanathan, a Control Systems engineer with over thirty years of experience in “Engineering Management”, is at the helm of the factory. Having worked in many factories in India and UK, when he was employed with ICI India Ltd, he brings his abundant wealth of experience in his field to Raini Industries. He is particularly well-versed with systems design and component manufacture processes, from ‘concept’ to ‘commission’. Mr. Panchanathan has been the Factory Head at the Thirumudivakkam unit for more than four years now.

Unmatched quality. A wide range of products. Constant innovation. Attractive service. It does not come as a surprise that Raini Industries boasts of some of the biggest names in the world it supplies to. Some of the most outstanding MNCs and large corporations find a place in Raini's galaxy of prestigious clients. Here's a partial list of Raini's large customer base:

Grid Solutions SAS	France	Johnson Lifts P. Ltd	Chennai/	Sanmina-SCI India Private Limited	Kanchipuram
Grid Solutions Transmissao de Energia Ltda	Brazil		Nagpur	Schwing Stetter (India) Pvt Ltd.	Chennai
GE GRID (Switzerland) GmBH	Switzerland	Johnson Escalator Private Limited	Chennai	Shivkart Electrical Sub Assemblies	Chennai
GE T&D India Limited	Padappai/	Kone Elevator India P. Ltd	Chennai	Sicor Engineering India P Ltd	Chennai
	Pallavaram	Kali BMH Systems Pvt Ltd	Chennai	Siemens Ltd. BT. Division	Pondicherry
Ace Electrical Equipments (I) Pvt Ltd.	Hosur	Maika Metals (P) Ltd	Chennai	Seinsa Autofren India Pvt. Ltd	Chennai
Acrastyle Controls India P. Ltd.	Chennai	Marine Pipe Products	Chennai	Sri Balaji Assemblies & Plastics Pvt Ltd	Chennai
Amara Raja Power Systems Ltd	Tirupati	MEC COM Limited	United	Sri Balajis Pressings	Chennai
Amphenol Omni Connect India Pvt. Ltd	Chennai		Kingdom	SS Controls Systems Pvt. Ltd	Bengaluru
Arihant Duraplast	Chennai	Melcon Controls Private Limited	Chennai	SS Manufacturing Pvt. Ltd	Kanchipuram
Ajax Fiori Engineering (India) Pvt. Ltd	Bengaluru	Membrane Hitech	Chennai	Stera Engineering (India) P. Ltd	Chennai
ASCO Numatics (India) Pvt. Ltd.,	Chennai	Minda Industries Ltd	Hosur	Suja Shoei Industries India Pvt Ltd	Chennai
Bonfiglioli Transmissions (Pvt) Ltd	Chennai	Mitsubishi Elevator ETA India P Ltd	Chennai	Sundaram Hydraulics Limited	Kanchipuram
Bharat Petroleum Corporation Ltd	Mumbai	Mysore Polymer & Rubber Products Limited	Karnataka	Syrma Technology Pvt Ltd	Chennai
Cavinkare Pvt Ltd	Pondicherry	Nash Industries (I) Pvt Ltd	Chennai	Shriniwas Machine Craft Pvt Ltd	Pune
Conpro Enterprises Pvt. Ltd	Chennai	Nefab India Pvt Ltd	Kanchipuram	Sri Ganeshram Enterprises	Chennai
Consul Neowatt Power Solutions P. Ltd	Chennai	Nice Neotech Medical Systems P. Ltd	Chennai	Susil Enterprises	Chennai
Dorma India Private Limited	Chennai	Nobel Automotive India Pvt Ltd	Chennai	Shriniwas Machine Craft Pvt. Ltd	Pune
Dover India P. Ltd	Chennai	Nucleus Satellite Communication (Madras) Pvt. Ltd	Chennai	Sri Lakshmi Industries	Chennai
Dwaraka Engineering	Chennai	Pall India Pvt Ltd	Bengaluru	SRM Technologies	Chennai
ECMA Pressings	Chennai	Popular Systems	Coimbatore	Tractors And Farm Equipment Ltd	Chennai
Efcon India (P) Ltd	Mumbai	Presevi Industrial Corp	Chennai	TI Cycles of India	Chennai
Essee Metal Containers Pvt. Ltd	Chennai	Precimeasure Controls Pvt. Ltd	Chennai	Triton Technologies Private Limited	Chennai
E-trans Solutions Pvt. Ltd	Kolkatta	Phoenix Medical Systems (P) Ltd	Chennai	Trimble Mobility Solutions India Pvt. Ltd	Pune
Flextronics Tech (I) Pvt. Limited	Chennai	Quality Loggers Pvt. Ltd	Mumbai	V.P.Engineers	Chennai
General Connectors P. Ltd.	Pondicherry	Rass Manufacturing India (P) Ltd	Kanchipuram	VEER-O-Metals Pvt. Ltd (E.O.U)	Bengaluru
GG Cables and Wires India Private Limited	Bengaluru	R.Stahl (P) Ltd	Chennai	Venture Power Systems India Private Limited	Chennai
Greaves Cotton Limited	Ranipet	Rittal India Pvt Ltd	Bengaluru	Viman Multiplug P. Ltd.	Bengaluru
Gamesa Renewable Private Limited	Chennai	Rewale Engineering	Pune	Wittur Elevator Components India P. Ltd	Kanchipuram
Honeywell Electrical Devices and Systems	Chennai	Salzer Electronics Ltd -II Plitron	Coimbatore	Toshiba Johnson Elevators (India) Private Limited	Chennai
Integrated Microelectronics Inc	Philippines	Samraj Engineering Controls P. Ltd	Kanchipuram	Vaata Smart Ltd	Chennai

UNIT 1

RAINI INDUSTRIES INDIA PRIVATE LIMITED

No. 6, Nehru Street, Sardar Colony

Ekkaduthangal, Chennai - 600 032

Ph: +91 44 2225 0894, 2225 2103

CST NO : 1128545 / Date : 16.05.2013

TIN NO : 33220907454

ECC NO : AAGCR3278QEM001

PAN NO : AAGCR3278Q

ESI NO : 51-00-085316-000-205

CE. REGN. NO. : AAGCR3278QEM001

RANGE : Ekkaduthangal

DIVISION : III Guindy

COMMISIONERATE : II

SERVICE TAX NO : AAGCR3278QSD002

RANGE ADDRESS : Superintendent of Central Excise

Ekkaduthangal Range, Guindy Divisoin

Anna salai, Periyar Building, Nandanam, Chennai - 35

Tariff Heading No: 84313100 / 87149990 / 84807100

L. Rathnaraj	Managing Director	99401 38563
G.V. Rajeash	Business Development Manager	97890 74736
B. Ganesh	Chief Tool designer & Fabricator	99401 66193

UNIT 2

RAINI INDUSTRIES INDIA PRIVATE LIMITED

139, SIDCO Industrial Estate, Thirumudivakkam

Chennai - 600 044

Ph: + 91 44 4285 2096

CST NO : 1128545 / Date : 16.05.2013

TIN NO : 33220907454

ECC NO : AAGCR3278QEM002

PAN NO : AAGCR3278Q

ESI NO : 51-00-085316-000-205

CE. REGN. No. : AAGCR3278QEM002

RANGE : Thirumudivakkam - I

DIVISION : Chrompet

RANGE ADDRESS : Superintendent of Central Excise

Thirumudivakkam - I Range

Chrompet Division, Guna Complex

3rd Floor, 445, Anna Salai

Teynampet, Chennai - 600 018

Tariff Heading No : 84313100 / 87149990

K. Ganesan	Quality Assurance Manager	98401 39757
Danesh Babu	Director-Moulding Operation	99401 60171
R. Panchanathan	Factory Head	98401 83331





Raini Industries India Private Limited

6, Nehru Street, Sardar Colony, Ekkattuthangal, Chennai - 600 032

Phone: 044 22252103 Telefax: 044 22250894

E-mail: rainiindustries@gmail.com

Website: www.rainiindustries.com